

BRANSON

X-Port™

Real-Time Data Logger and Quality Monitor for the Welding Process

Overview

Branson X-Port is a Windows application that helps manufacturers to monitor the quality of their products during the welding process. Users can log weld data, track, correct issues in real-time, and better understand how various processes are performing. X-Port may be used with Branson 2000X Series via Ethernet connection and with Branson 2000 Series systems via RS-232 connection.

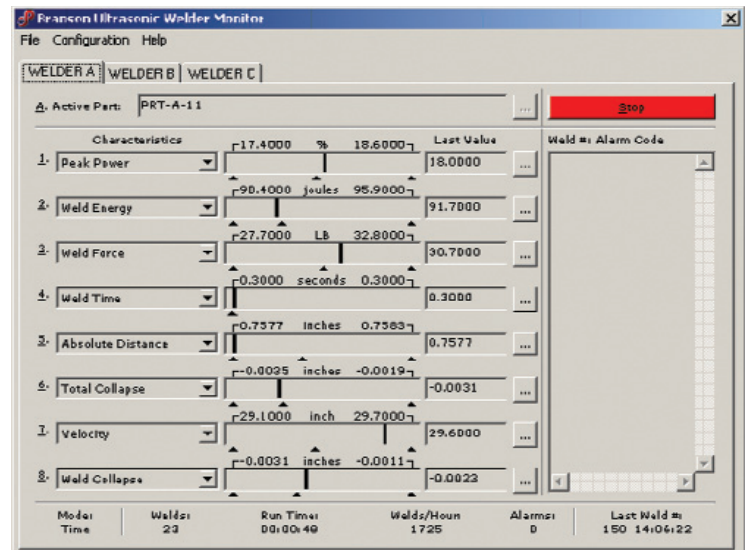
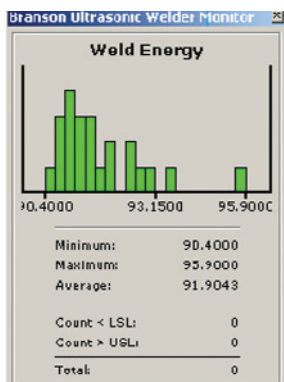
With Branson X-Port you can view and monitor all Branson 2000X touchscreen systems (and 2000X t and ea power supplies that contain the optional ethernet card) on the shop floor or in the global network from a single location, such as a corporate office (one license per welder connection is required). The name of each welder connected to Branson X-Port appears in a tab across the top of the main window. Within each tab are details about the current activity of the welder. The data shows which welders are performing and at what levels.

Display Features

The X-Port monitor shows real-time visual displays of critical welding attributes, equipment error codes, and other

summary information. Weld characteristics include:

- Absolute Distance
- Total Collapse
- Weld Collapse
- Weld Force
- Peak Power
- Velocity
- Weld Energy
- Weld Time



Data Logging Feature

Each time a weld is performed, Branson X-Port can be configured to log weld attributes and error codes to a tab delimited text file. This file can then be used by other reporting and analytical software applications, such as Excel, Minitab, STATISTICA, etc.

- ◀ Individual weld attributes can be displayed in a histogram format.

Powered by: 



Branson Ultrasonics Corporation 41 Eagle Road, Danbury, CT 06813-1961
203.796.0349 • FAX 203.796.9838 • info@BransonUltrasonics.com
www.Branson-PlasticsJoin.com

BRANSON

First Year Maintenance Support Included *

- Toll free telephone support 877.772.7978, Monday through Friday, 8:00 a.m. to 7:00 p.m. EST.
- Internet service for application notes, product updates, and patches
- On-line support for troubleshooting *Branson X-Port* using software tools such as WebEx.
- Free version upgrades
- Discounts on training and consulting

Ordering Information

Branson X-Port™ License EDP No. 225-266-150

Note: One license required per welder connection.

*After the first year, the annual maintenance support is 15% of the current cost of *Branson X-Port* per year.

For Additional Functionality – SPC Integration **ProFicient™** Software

For additional functionality, *Branson X-Port* integrates with the *InfinityQS ProFicient Quality Suite*. When connected to a *ProFicient* database, *Branson X-Port* can generate color-coded indicators of whether welder characteristic data is within the expected tolerances. These specifications, along with available warning limits, can tell the operator that a characteristic is nearing an unexpected value as well as notify them that an out of specification condition has occurred.

By integrating with *ProFicient* users can take advantage of *ProFicient's* real-time alarm notifications, which can be sent to specified individuals when a characteristic falls out of its specified limit.

With *ProFicient* Software, users have real-time visibility and analysis of their quality data:

Advanced Control Charting Tools

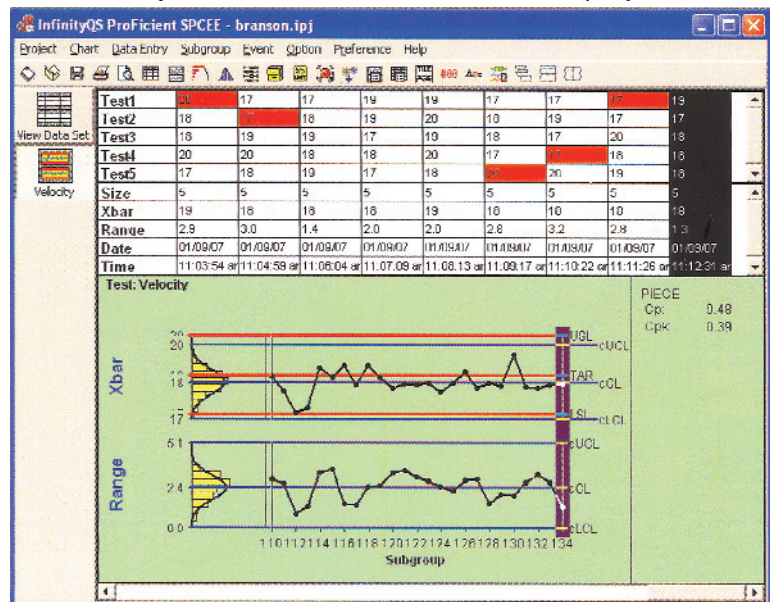
ProFicient has the tools to manage SPC for long and short production runs, multiple characteristics and limited data collection opportunities. With over 300 different control charts, *InfinityQS* ensures there is a tool that is uniquely matched to virtually any operation.

Process Event Handling and Notification

This feature automatically logs downtime and events to the database while optionally requiring Assignable Causes and Corrective Actions. When alarms are violated, automatic emails including control chart images can be sent to shop floor operators who must immediately know when a problem occurs.

Sophisticated Comparative Analysis Tools

ProFicient's Multi-tier Pareto and Box & Whisker charts allow users to sort, slice and dice data in millions of ways, allowing extensive comparative analyses. By using readily available production data, there is no need to invest in expensive off-line studies or additional statistical software.



All specifications subject to change without notice.

Note: All sales shall be subject to the Supplier's terms and conditions of sale as described in Branson's quotations and sales contracts.